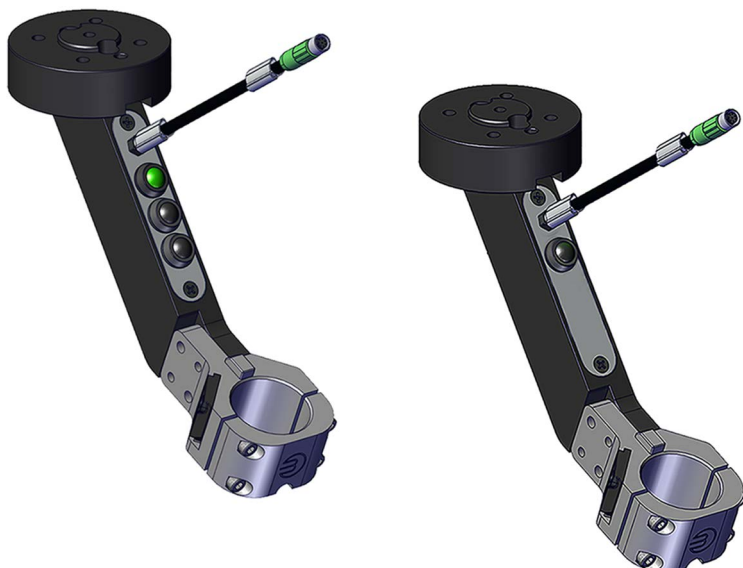
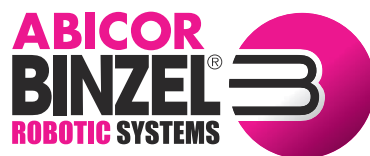


TECHNOLOGY FOR THE WELDER'S WORLD.

## EN Instruction leaflet



**RTM ABiX Freedrive**  
**RTM ABiX EasyTeach**  
**EN Flange**



[www.binzel-abicor.com](http://www.binzel-abicor.com)

## 1 Identification

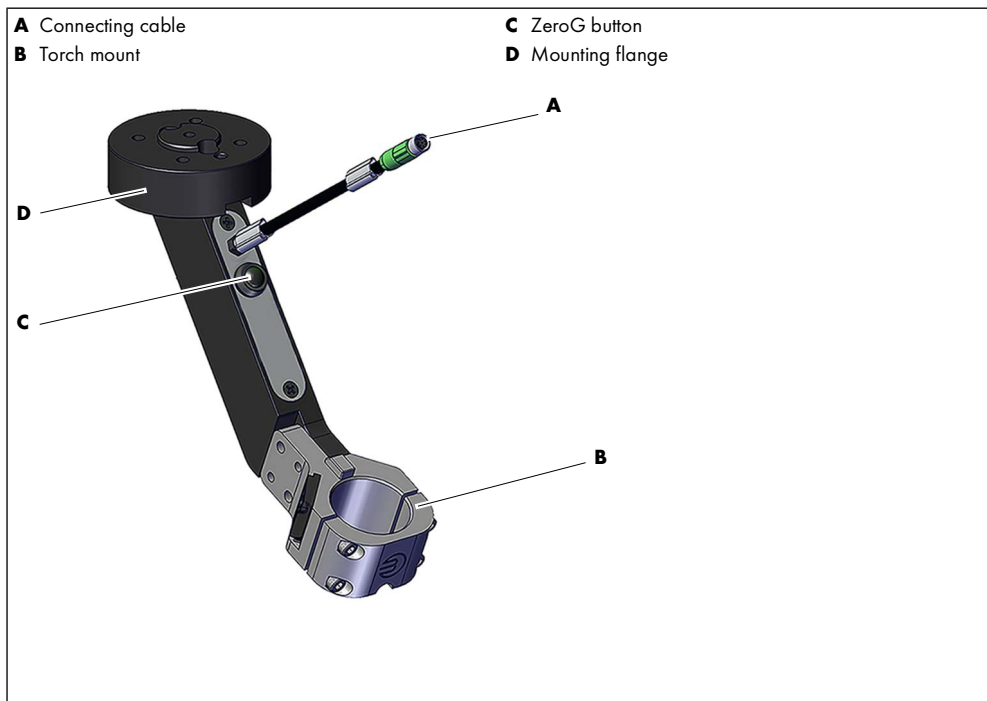
This instruction leaflet describes how to assemble the flange to the cobot and the welding torch to the torch mount.

- ▶ Consult the documentation for the welding components.
- ▶ Only qualified personnel are permitted to perform work on the device or system.

## 2 Product description

The RTM AB1x Freedrive/RTM AB1x EasyTeach flange is available in a one-button Freedrive version (Fig. 1) or a three-button EasyTeach version (Fig. 2) as shown below. Each has an 8-pin M8 socket interface.

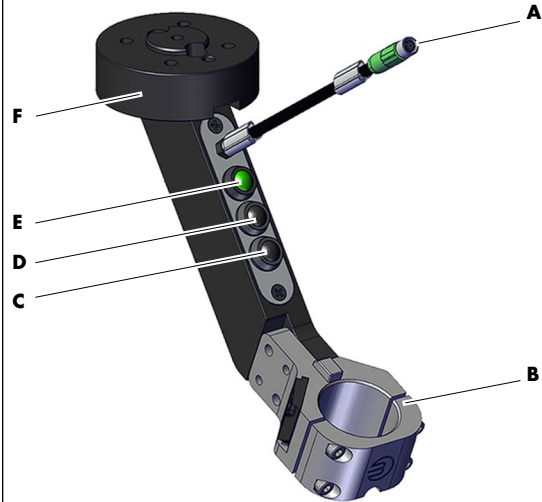
**Fig. 1** RTM AB1x Freedrive



The ZeroG button releases the robot axis (ZeroG) and makes it easier to move the robot by hand.

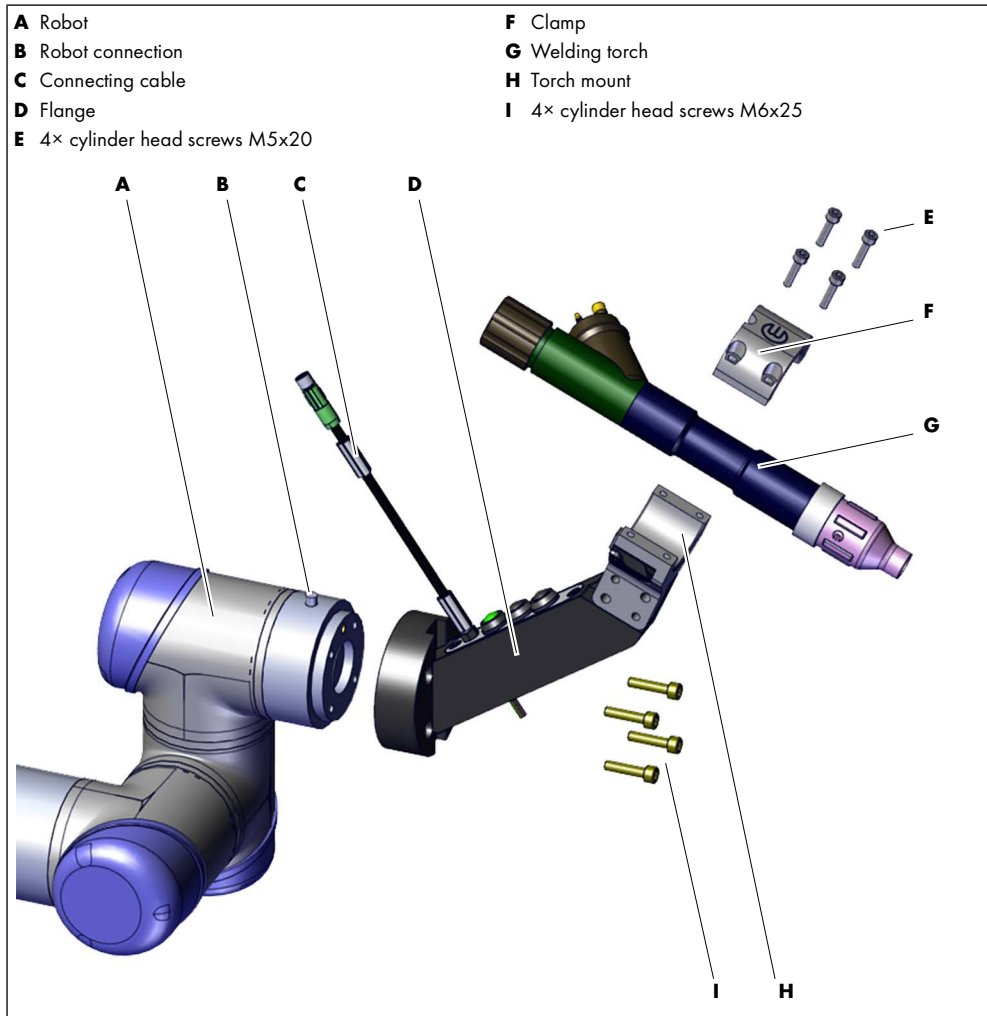
**Fig. 2** RTM AB1x EasyTeach

- |                                     |  |
|-------------------------------------|--|
| <b>A</b> Connecting cable           | <b>D</b> <Movement programming> button   |
| <b>B</b> Torch mount                | <b>E</b> <Robot movement release> button |
| <b>C</b> <Welding functions> button | <b>F</b> Mounting flange                 |



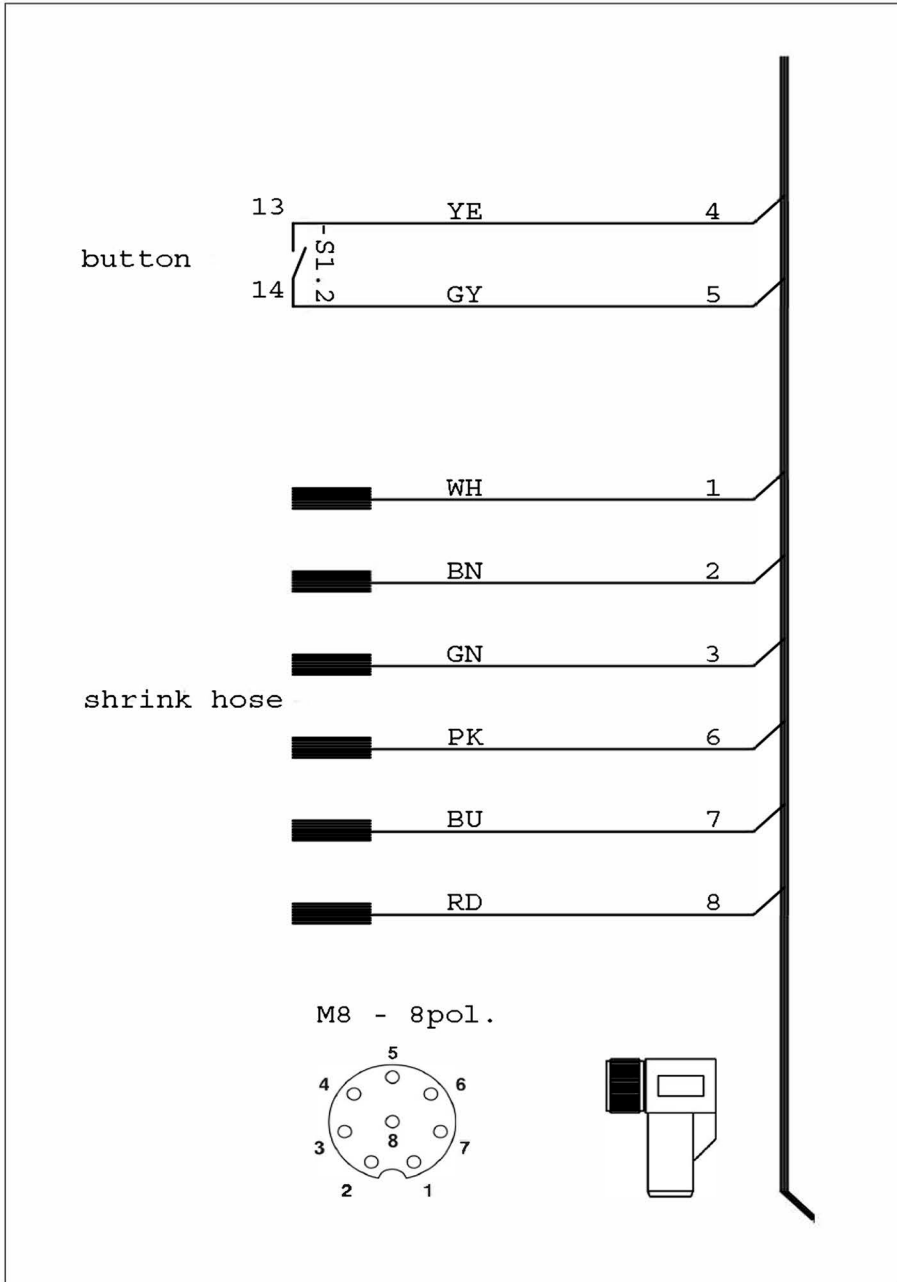
### 3 Mounting the flange and the welding torch

Fig. 3 Mounting the flange and the welding torch

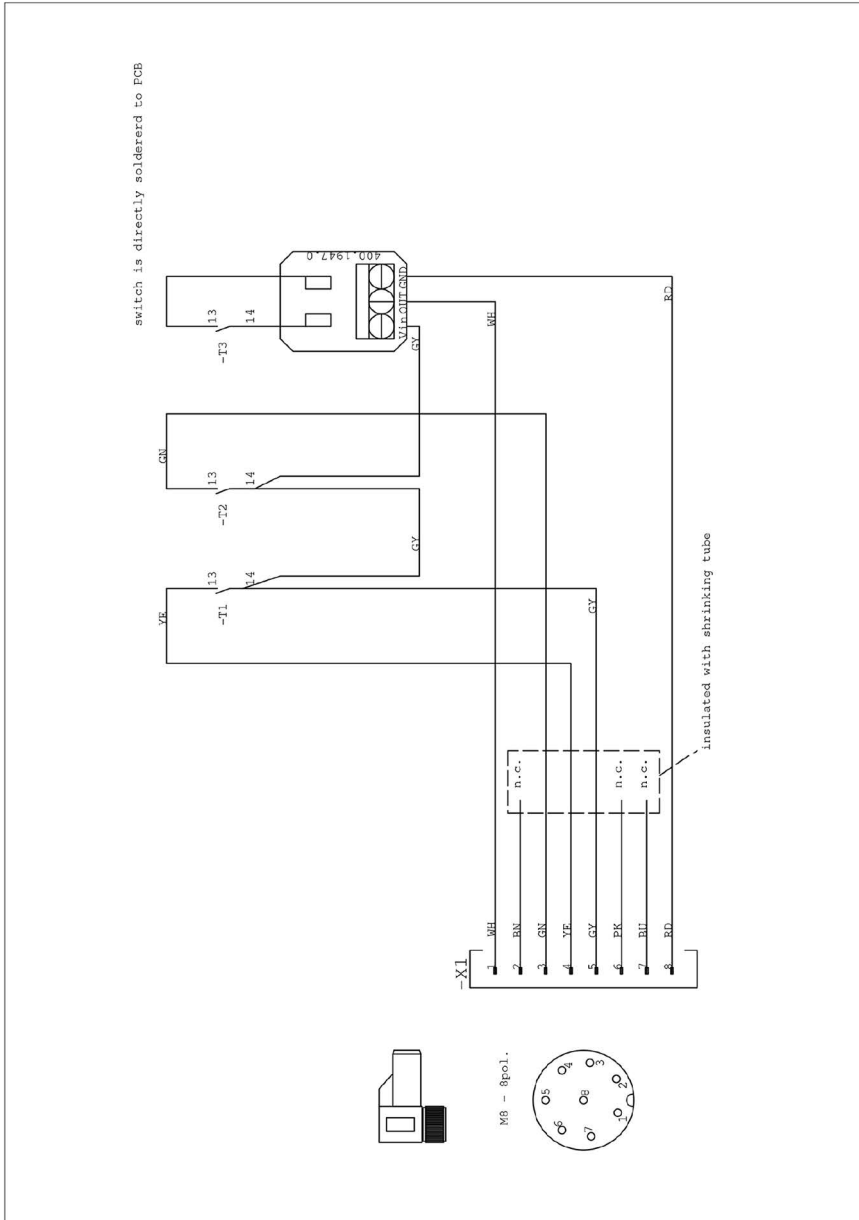


- 1 Fix the RTM AB1x Freedrive/RTM AB1x EasyTeach flange with cylinder head screws (**I**) on the robot (**A**) (tightening torque max. 4 Nm).
- 2 Connect the connection cable (**C**) to the robot connection (**B**).
- 3 Insert the welding torch (**G**) in the torch mount (**H**) and fix manually.
- 4 Tighten the clamp (**F**) with cylinder head screws (**E**) (tightening torque max. 4 Nm).

4 Circuit diagram RTM AB1x Freedrive



5 Circuit diagram RTM AB1x EasyTeach





TECHNOLOGY FOR THE WELDER'S WORLD.



Alexander Binzel Schweisstechnik  
GmbH & Co. KG  
Kiesacker • 35418 Buseck • GERMANY  
T +49 64 08 / 59-0  
F +49 64 08 / 59-191  
info@binzel-abicor.com

[www.binzel-abicor.com](http://www.binzel-abicor.com)

BEI.0421.0 • 2023-11-08

**IBG**  
GROUP