

TECHNOLOGY FOR THE WELDER'S WORLD.

ABIMIG AUT

Automatic MIG Guns



ABICOR
BINZEL® 

www.binzel-abicor.com

ABIMIG AUT AT

Air-cooled Automatic MIG Guns

ABIMIG AUT AT: Cable Assembly/Rear Ends

Unlike most other MIG gun manufacturers, ABICOR Binzel extrudes its own power cable to exacting standards of quality and longevity. All ABIMIG AUT AT MIG guns use ABICOR's signature Bikox® power cable, with these features:

- Polyamide inner wire conduit for consistent gas coverage.
- Braided power cable for multi-directional flexibility.
- Hydraulically compressed Bikox® fittings for durability and a permanent gas seal.

The ABIMIG AUT AT features two cable assembly rear end configurations: the universal connector for direct plugs or EURO quick connection (E).



ABIMIG AUT AT

200 - 400 Amp Automatic MIG Guns

The ABIMIG AUT AT series of automatic GMAW welding guns offer you lower operation costs with these welder-friendly features.

- Modular swannecks for fast replacement and interchangeability. Affordably priced to extend gun life.
- Optional neck liners to save wear on gun liners, providing gun liner cost savings.
- ABICOR Binzel universal rear end and connector kits for direct plugs, or Euro quick-connections.
- Positionable 22°, 45°, 60°, and 180° bend swannecks to give improved access to any job.

ABIMIG® AUT AT 255

Technical data (EN 60 974-7):

Rating: 200A
Duty cycle: 60%
CO₂ 230 A
Mixed gases 220 A
M21 (DIN EN 439)
Wire size: 0.8 - 1.2 mm (.030" - .045")

ABIMIG® AUT AT 355

Technical data (EN 60 974-7):

Rating: 300A
Duty cycle: 60%
CO₂ 340 A
Mixed gases 310 A
M21 (DIN EN 439)
Wire size: 0.9 - 1.6 mm (.035" - .062")

ABIMIG® AUT AT 415

Technical data (EN 60 974-7):

Rating: 400A
Duty cycle: 60%
CO₂ 400 A
Mixed gases 355 A
M21 (DIN EN 439)
Wire size: 0.9 - 2.4 mm (.035" - .094")



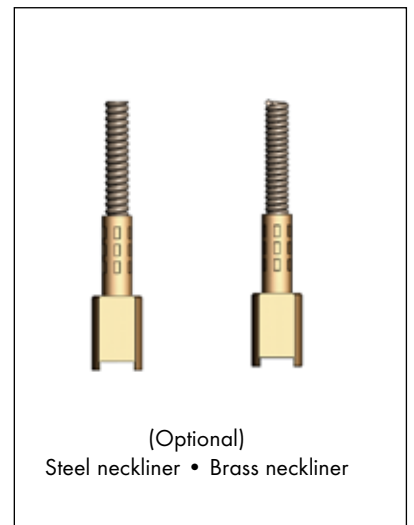
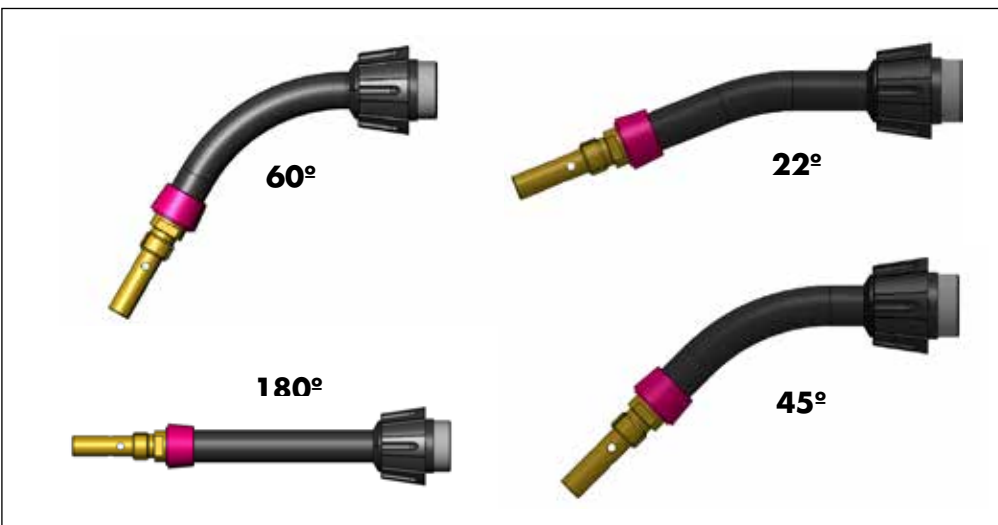
ABIMIG AUT AT

Ordering Chart

A	4	MT	22	- 5	- 35	L
Torch Model	Amperage	Torch Type	Neck	Cable	Wire Size	Back End
Torch Model A - ABIMIG AUT	Amperage 2 - 200 Amp (255 mixed gas) 3 - 300 Amp (355 mixed gas) 4 - 400 Amp (415 mixed gas)	Torch Type M - Machine Torch	Neck 180 - 180 Straight 22 - 22 Bend 45 - 45 Bend 60 - 60 Bend	Cable 4 - 4 Foot Cable 5 - 5 Foot Cable 6 - 6 Foot Cable 8 - 8 Foot Cable 10 - 10 Foot Cable 12 - 12 Foot Cable 15 - 15 Foot Cable	Wire Size 35 - .035 Inches ¹ 45 - .045 Inches 52 - .052 Inches ² 62 - .062 Inches ² 78 - .078 Inches ³ 94 - .094 Inches ³	Back End E - Euro L - Lincoln External Gas HT - Tweco 4 / Lincoln Internal Gas M - Miller Internal Gas

ABIMIG AUT AT: Modular Swannecks

The ABICOR ABIMIG AUT AT series features screw-on modular swannecks for fast and easy replacement. All ABIMIG AUT AT swannecks are fully positionable (360°) and interchangeable. All ABIMIG AUT AT swannecks use neck liners to save wear on the gun liners. Optional neck liners are available in steel for steel wire or brass for welding aluminum.



ABIMIG AUT AT

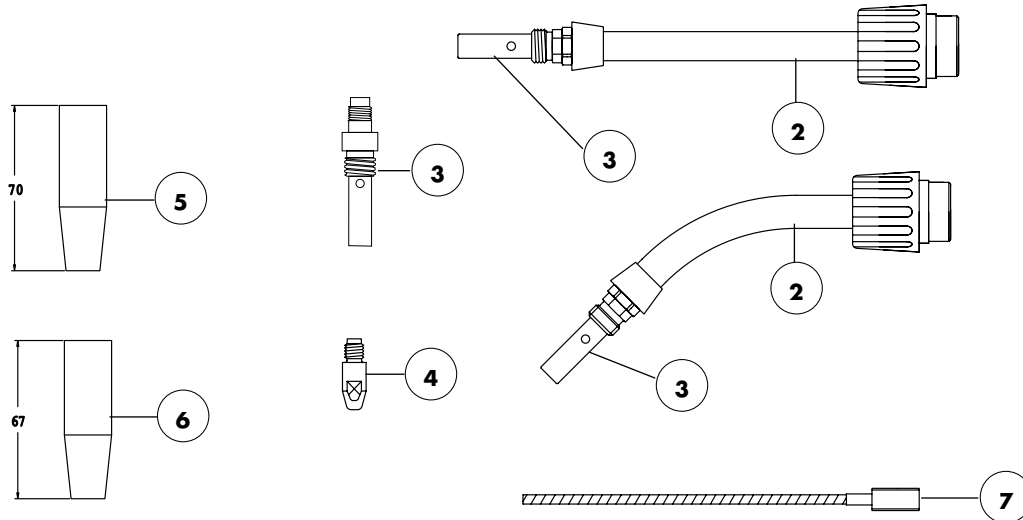
200 Amp Automatic MIG Guns

ABIMIG AUT AT THREADED

Wire Size/Type	Contact Tip Part No.	Tip Holder/ Diffuser Part No.	Nozzle Part No.	Optional Neck Liner Part No.	Cable Liner Part No.
.030 Steel	140.0051	H2T-6-C	145.D015	S2435	SI4-3545-17-PT
.035 Steel	140.0169	H2T-6-C	145.D015	122.D038	SI4-3545-17-PT
.040 Steel	140.0242	H2T-6-C	145.D015	122.D038	SI4-3545-17-PT
.045 Steel	140.0379	H2T-6-C	145.D015	122.D038	SI4-3545-17-PT

200 AMP ABIMIG AUT AT Swanneck Parts List

1 = Items 2 & 3 assembled



Item No.	Description	Part No.
1	Swannek AT 255 Threaded 60°	004.0709
1	Swannek AT 255 Threaded 45°	004.0761
1	Swannek AT 255 Threaded 22°	004.0760
1	Swannek AT 255 Threaded 180°	004.0759
3	Tip Holder/Diffuser*	H2T-6-C
4	Contact Tip .030" M6 CU 069	140.0051
4	Contact Tip .035" M6 CU 069	140.0169
4	Contact Tip .040" M6 CU 069	140.0242
4	Contact Tip .045" M6 CU 069	140.0379
5	Nozzle Threaded 1/2" ID Recess*	145.D015
5	Nozzle Threaded 9/16" ID Recess	145.D016
5	Nozzle Threaded 5/8" ID Recess	145.D011
6	Nozzle Threaded 1/2" ID Flush	145.D013
6	Nozzle Threaded 9/16" ID Flush	145.D012
7	Neck Liner Steel .024-.035 (Optional)	S2435
7	Neck Liner Steel .035-.045 (Optional)	122.D038

*Denotes Factory Setup

ABIMIG AUT AT

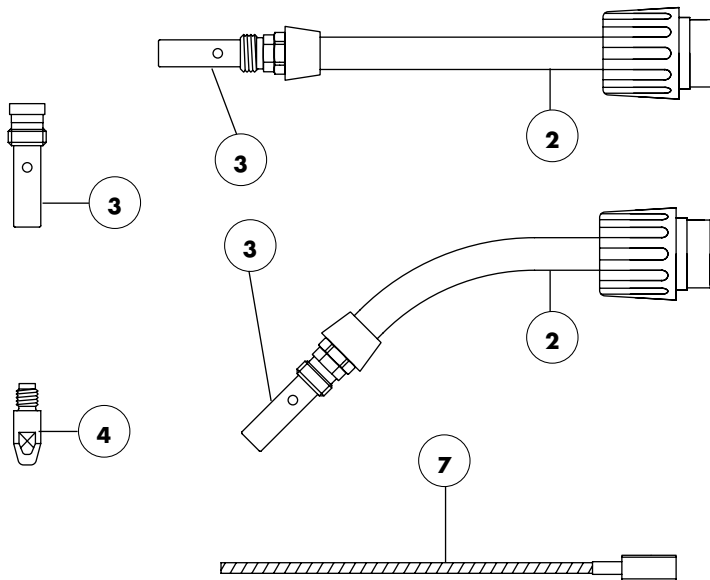
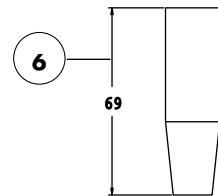
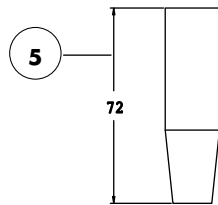
300 Amp Automatic MIG Guns

ABIMIG AUT AT THREADED

Wire Size/ Type	Contact Tip Part No.	Tip holder/ Diffuser Part No.	Nozzle Part No.	Optional Neckliner Part No.	Cable Liner Part No.
.035 Steel	140.0214	H3T-8-C	145.D026	122.D038	S14-3545-17-PT
.040 Steel	140.0313	H3T-8-C	145.D026	122.D038	S14-3545-17-PT
.045 Steel	140.0442	H3T-8-C	145.D026	122.D038	S14-3545-17-PT
.052 Steel	140.0533	H3T-8-C	145.D026	122.D045	S14-5262-17-PT
.062 Steel	140.0587	H3T-8-C	145.D026	122.D045	S14-5262-17-PT

300 AMP ABIMIG AUT AT Consumable Parts List & Swanneck: Threaded

1 = Items 2 & 3 assembled



Item No.	Description	Part No.
1	Swanneck AT 355 Threaded 60°	014.0570
1	Swanneck AT 355 Threaded 45°	014.0658
1	Swanneck AT 355 Threaded 22°	014.0657
1	Swanneck AT 355 Threaded 180°	014.0656
3	Tip Holder/Diffuser*	H3T-8-C
4	Contact Tip .035" M8 CU 262	140.0214
4	Contact Tip .040" M8 CU 262	140.0313
4	Contact Tip .045" M8 CU 262	140.0442
4	Contact Tip .052" M8 CU 262	140.0533
4	Contact Tip .062" M8 CU 262	140.0587
5	Nozzle Threaded 1/2" ID Recess	145.D025
5	Nozzle Threaded 5/8" ID Recess*	145.D026
5	Nozzle Threaded 3/4" ID Recess	145.D021
6	Nozzle Threaded 9/16" ID Flush	145.D023
6	Nozzle Threaded 5/8" ID Flush	145.D022
7	Neck Liner Steel .035-.045 (Optional)	122.D038
7	Neck Liner Steel .052-.062 (Optional)	122.D045

*Denotes Factory Setup

ABIMIG AUT AT

400 Amp Automatic MIG Guns

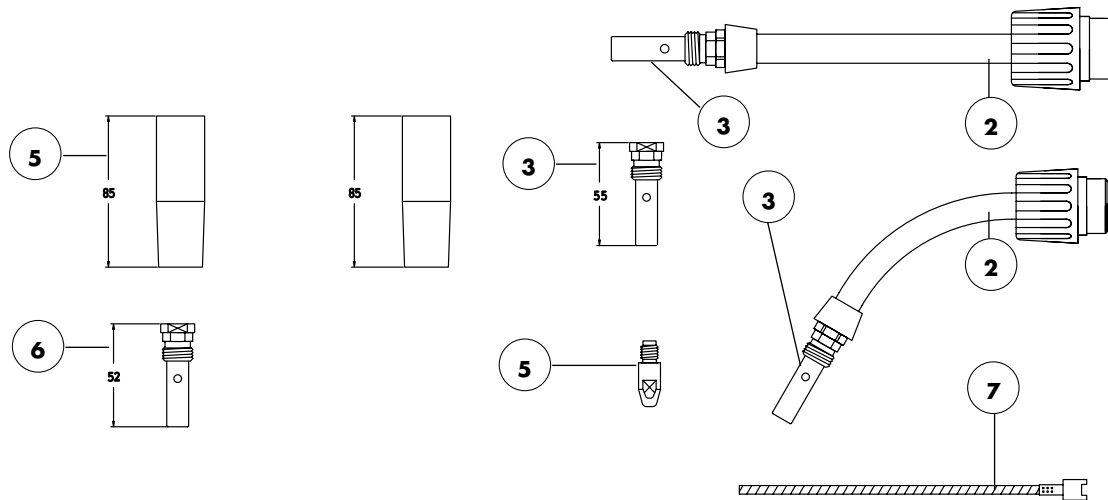
ABIMIG AUT AT THREADED

Wire Size/Type	Contact Tip Part No.	Tip Holder/Diffuser Part No.	Nozzle Part No.	Optional Neck Liner Part No.	Cable Liner Part No.
.035 Steel	140.0214	H4T-8-C	145.D244	122.D077	S14-3545-17-PT
.040 Steel	140.0313	H4T-8-C	145.D244	122.D077	S14-3545-17-PT
.045 Steel	140.0442	H4T-8-C	145.D244	122.D077	S14-3545-17-PT
.052 Steel	140.0533	H4T-8-C	145.D244	122.D078	S14-5262-17-PT
.062 Steel	140.0587	H4T-8-C	145.D244	122.D078	S14-5262-17-PT
.078 Steel	140.0653	H4T-8-C	145.D244	n/a	S14-7894-17-PT
.094 Steel	140.0677	H4T-8-C	145.D244	n/a	S14-7894-17-PT

When using .078-.094 wire, do not use a neck liner. Instead, run the cable liner up to the contact tip.
n/a = Not Applicable

400 AMP ABIMIG AUT AT Consumable Parts List & Swanneck: Threaded Standard

1 = Items 2 & 3 assembled



Item No.	Description	Part No.	Item No.	Description	Part No.
1	Swanneck AT 415 Threaded 60°	016.0039	5	Contact Tip .094" M8 CU 262	140.0677
1	Swanneck AT 415 Threaded 45°	016.0049	5	Contact Tip .035" M10 CZ 403	140.1248
1	Swanneck AT 415 Threaded 22°	016.0048	5	Contact Tip .040" M10 CZ 403	140.0348
1	Swanneck AT 415 threaded 180°	016.0047	5	Contact Tip .045" M10 CZ 403	140.0481
3	Tip Holder/Diffuser M8 1/8" recess* installed on items 1 & 2	H4T-8-C*	5	Contact Tip .052" M10 CZ 403	140.0547
4	Tip Holder/Diffuser M10 1/4" recess optional, use with M10 tips	H4T-10-C	5	Contact Tip .062" M10 CZ 403	140.0616
5	Contact Tip .035" M8 CU 262	140.0214	5	Contact Tip .078" M10 CZ 403	140.0665
5	Contact Tip .040" M8 CU 262	140.0313	5	Contact Tip .094" M10 CZ 403	140.0698
5	Contact Tip .045" M8 CU 262	140.0442	6	Nozzle Threaded 1/2" ID	145.D243
5	Contact Tip .052" M8 CU 262	140.0533	6	Nozzle Threaded 5/8" ID*	145.D244
5	Contact Tip .062" M8 CU 262	140.0587	6	Nozzle Threaded 3/4" ID	145.D245
5	Contact Tip .078" M8 CU 262	140.0653	7	Neck Liner Steel .035-.045	122.D077
			7	Neck Liner Steel .052-.062	122.D078

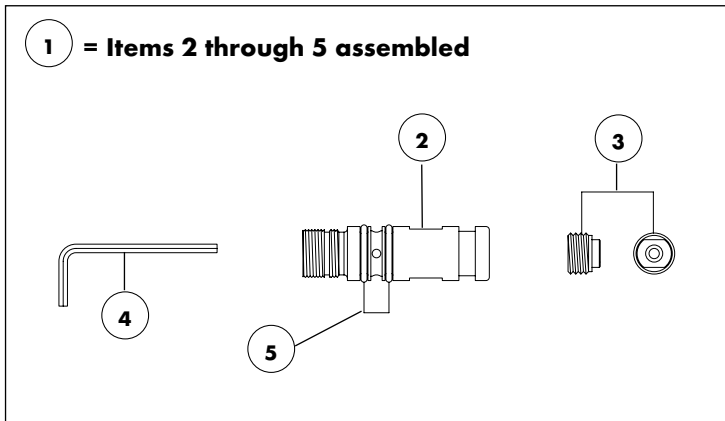
Neck liner steel .078-.094 not available. Run cable liner up to the contact tip.

*Denotes Factory Setup

*Denotes Factory Setup

ABIMIG AUT AT

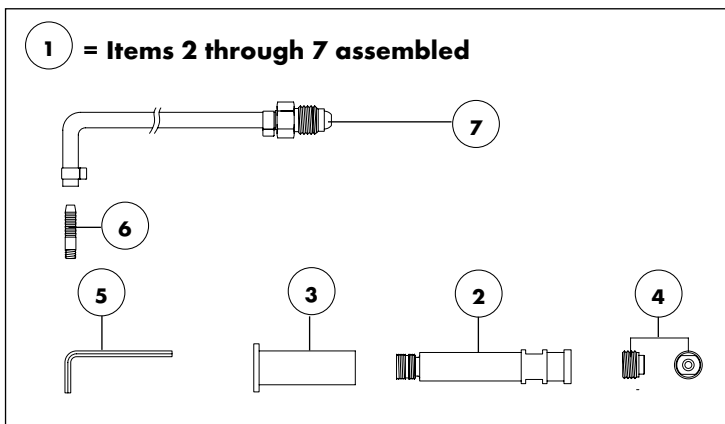
Connector Kits and Parts



ABIMIG AUT AT Mig-Gun Direct Plug

Connector Kit: Hobart/Tweco 5/8" & Lincoln Internal Gas

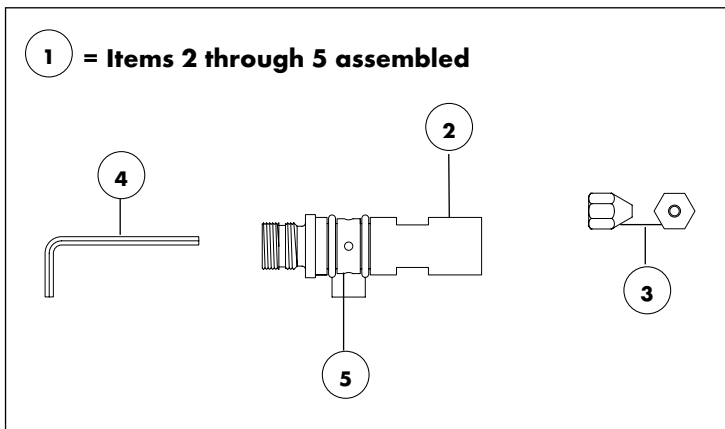
Item No.	Description	Part No.
1	Connector Kit, Hobart/Tweco	CK4-MT-HT
2	Connector Plug HT CPL complete	501.2777
3	Liner Nut HT/LN	272.9035
4	Allen Wrench 2.5 mm	191.0017
5	O-Rings (2 required)	165.0025



ABIMIG AUT AT Mig-Gun Direct Plug

Connector Kit: Lincoln

Item No.	Description	Part No.
1	Connector Kit, Lincoln	CK4-MT-L
2	Connector Plug L	501.9241
3	Insulator Bushing	501.9192
4	Liner Nut HT/LN	272.9035
5	Allen Wrench 2.5 mm	191.0017
6	Gas Fitting with M6 THD	353.0002
7	Gas Hose Assembly	102.9149



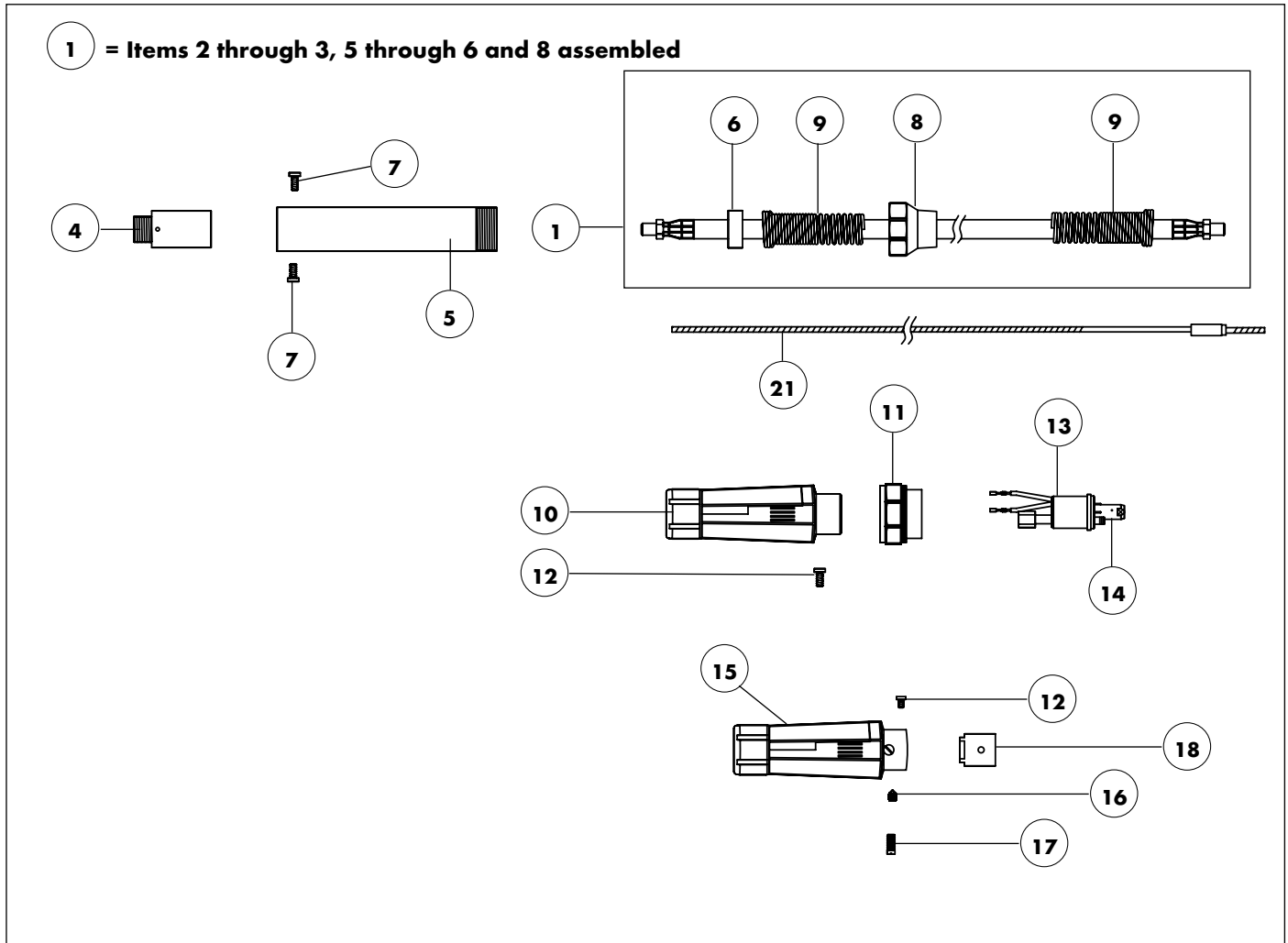
ABIMIG AUT AT Mig-Gun Direct Plug

Connector Kit: Miller

Item No.	Description	Part No.
1	Connector Kit, Miller	CK4-MT-M
2	Connector Plug Miller CPL complete	501.9245
3	Liner Nut MR	272.9036
4	Allen Wrench 2.5 mm	191.0017
5	O-Rings (2 required)	165.9006

ABIMIG AUT AT

Replacement Parts List



Item No.	Description	Part No.	Item No.	Description	Part No.
1	ABIMIG 400A Bikox® 4'	A4-4MT	15	Rear Housing Complete, Direct	501.D501
1	ABIMIG 400A Bikox® 5'	A4-5MT	16	Set Screw Hex Head M5 x 5	009.0136
1	ABIMIG 400A Bikox® 6'	A4-6MT	17	Gas Seal	001.D099
1	ABIMIG 400A Bikox® 8'	A4-8MT	18	Adapter Block, Direct	501.D347
1	ABIMIG 400A Bikox® 10'	A4-10MT		(includes 12, 16 and 17)	
1	ABIMIG 400A Bikox® 12'	A4-12MT	21	Liner Insulated .035 - .045	SI4-3545-8PT
1	ABIMIG 400A Bikox® 15'	A4-15MT		(.9mm - 1.2mm) 8' (3M)	
2	Nut Lock Brass, M14 x 1	500.0085	21	Liner Insulated .052 - .062	SI4-5262-8PT
4	Torch Body Alpha Aut	918.D016		(1.4mm - 1.6mm) 8' (3M)	
5	Handle Alpha Aut	180.D035	21	Liner Insulated .035 - .045	SI4-3545-17PT
6	Spring Retaining Ring	918.D020		(.9mm - 1.2mm) 17' (5M)	
7	Screw Countersunk	009.0188	21	Liner Insulated .052 - .062	SI4-5262-17PT
8	Handle Lock Nut	500.D049		(1.4mm - 1.6mm) 17' (5M)	
9	Support Spring	400.D205	21	Liner Insulated .078 - .094	SI4-7894-17PT
10	Rear Housing Complete	501.D508		(2.0mm - 2.4mm) 17' (5M)	
11	Adapter Nut	500.0213			
12	Screw Slotted head, M4 x 6	000.0552			
13	Adapter Block, Euro	501.9950			
14	Nut Liner Retaining M14 x 1	501.0129			

ABIMIG AUT WT

Modular Neck • Up to 600 A

Welding torches in the ABIMIG® AUT WT series perform at higher amperage limits than traditional torches of the same size. Our advanced, redesigned cooling circuit protects wear parts even better against overheating.

An integrated insulator within the gas nozzles makes the AUT WT particularly resistant to spatter bridging. The torch necks and the gas nozzle are nickel-plated to reduce spatter adhesions.

Thanks to the rotatable and exchangeable torch necks operators can adjust the ABIMIG® AUT WT torch to their exact needs.

Better technology. Better welding.

- Quick change, 360° positionable torch neck "WT" model reduces servicing costs
- Optional swanneck lengths & angles provide exceptional accesibility in difficult to reach joints.
- Long-life nickel-plated threaded gas nozzles with integrated spatter protection



The "WT" modular system offers the possibility to adapt various pre-defined necks with the base torch.

ABIMIG® AUT WT 440

Technical data (EN 60 974-7):
 Rating: 500 A CO₂
 450 A Mixed Gases
 M21 (DIN EN 439)

Duty cycle: 100 %
 Wire size: 0.8-1.6 mm
 (.030" - .062")

ABIMIG® AUT WT 540

Technical data (EN 60 974-7):
 Rating: 600 A CO₂
 550 A Mixed Gases
 M21 (DIN EN 439)

Duty cycle: 100 %
 Wire size: 0.8-1.6 mm
 (.030" - .062")

ABIMIG AUT WT Ordering Chart

AWT	5	15	-	1	T	45	-	E
Torch Model	Amp	Cable Length		Neck	Nozzles	Wire Size		Back End
<p>Torch Model</p> <p>AWT - AUT WT Torch</p>	<p>Amperage</p> <p>4 - 450 Amp (mixed gas) 5 - 550 Amp (mixed gas)</p>	<p>Cable Length</p> <p>30 - 3 Feet 40 - 4 Feet 50 - 5 Feet 60 - 6 Feet 70 - 7 Feet 80 - 8 Feet 90 - 9 Feet 10 - 10 Feet 12 - 12 Feet 15 - 15 Feet</p>		<p>Neck</p> <p>1 - 180 Degree 5 - 50 Degree</p>	<p>Nozzles</p>	<p>Wire Size</p> <p>35 - .035" 45 - .045" 52 - .052" 62 - .062"</p>		<p>Back End</p> <p>E - Euro L - Lincoln External Gas T - Tweco 4 / Lincoln Internal Gas M - Miller Internal Gas</p>
								<p>Wire Size</p>
								<p>Nozzle</p> <p>T - Threaded</p>

ABIMIG AUT WT Consumables

ABIMIG AUT WT 440



ABIMIG AUT WT 540



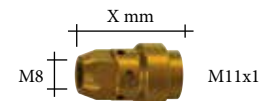
Gas nozzle including spatter protection

	Ø A		Ø A
Cylindrical	Ø 18	145.0745	Ø 20
Conical	Ø 14.5	145.D092 ¹	Ø 16
Conical	Ø 12	145.0746	Ø 14

ABIMIG AUT WT 440



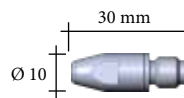
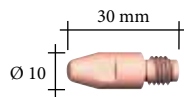
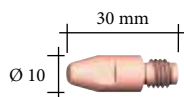
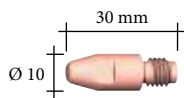
ABIMIG AUT WT 540



Contact tip holder

	X		X
Brass	26.0	142.0252.5	25.0
	28.0	142.0253.5 ¹	27.0
	31.0	142.0243.5	-
CuCrZr	-	-	25.0
	-	-	27.0

Contact tips



			M8
E-Cu ¹ Standard Copper	Ø 0.8	(.030")	140.0114
	Ø 0.9	(.035")	140.0214
	Ø 1.0	(.040")	140.0313
	Ø 1.2	(.045")	140.0442
	Ø 1.4	(.052")	140.0533
E-Cu for Al Standard Copper for Aluminum	Ø 1.6	(.062")	140.0587
	Ø 0.8	(.030")	141.0033
	Ø 0.9	(.035")	141.0043
	Ø 1.0	(.040")	141.0008
CuCrZr Heavy Duty Copper	Ø 1.2	(.045")	141.0075
	Ø 1.4	(.052")	141.0055
	Ø 1.6	(.062")	141.0022
	Ø 0.8	(.030")	140.0117
	Ø 0.9	(.035")	140.0217
Silver-Plated Heavy Duty Copper Silver-Plated	Ø 1.0	(.040")	140.0316
	Ø 1.2	(.045")	140.0445
	Ø 1.4	(.052")	140.0536
	Ø 1.6	(.062")	140.0590
	Ø 0.8	(.030")	147.0117
	Ø 0.9	(.035")	147.0217
	Ø 1.0	(.040")	147.0316
	Ø 1.2	(.045")	147.0445
	Ø 1.4	(.052")	147.0536
	Ø 1.6	(.062")	147.0590

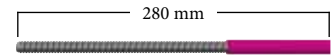
¹ - Standard set-up

** - Contact tips are standardized to fit all WT models.

ABIMIG AUT WT

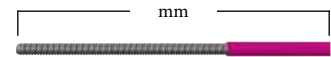
Consumables

ABIMIG AUT WT 440/540



Torch neck liner for standard swannecks

Steel	Ø 0.8-1.2	123.D097
	Ø 1.4-1.6	123.D098
Plastic liner	Ø 0.8-1.2	149.0418
	Ø 1.4-1.6	149.0420



Torch neck liner for optional long swannecks

Steel	Ø 0.8-1.2	123.D124
	Ø 1.4-1.6	Contact Us



Torch body insulating guides

ABIMIG AUT WT 540

For use with neckliners ¹	033.D182
--------------------------------------	----------

Liners

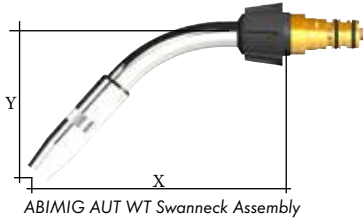


Insulated Liners for Steel Wires	Specifications	Part No.
Liner Steel 17' 035"-045"	for 10 - 15' gun	SI-3545-17PT
Liner Steel 17' 052"-062"	for 10 - 15' gun	SI-5262-17PT
Liner Steel 28' 035"-045"	for 20 - 25' gun	SI-3545-28PT
Liner Steel 28' 052"-062"	for 20 - 25' gun	SI-5262-28PT
Liners for Stainless Wires		
Liner C-TFE 035"-045" 12'	for 10' gun	127.9001
Liner C-TFE 035"-045" 14'	for 12' gun	127.9002
Liner C-TFE 035"-045" 17'	for 15' gun	127.9003
Liner C-TFE 052"-062" 12'	for 10' gun	127.9004
Liner C-TFE 052"-062" 14'	for 12' gun	127.9005
Liner C-TFE 052"-062" 17'	for 15' gun	127.9006
Liner PA 035"-045" 12'	for 10' gun	128.9002
Liner PA 035"-045" 14'	for 12' gun	128.9003
Liner PA 035"-045" 17'	for 15' gun	128.9004
Liner PA 052"-062" 12'	for 10' gun	128.9005
Liner PA 052"-062" 17'	for 15' gun	128.9007
Liner PA 062"-078" 12'	for 10' gun	128.9008
Liner PA 062"-078" 17'	for 15' gun	128.9010
Liners for Aluminum		
Liner C-TFE RD 035"-045" 12'	for 10' gun	126.9004
Liner C-TFE RD 035"-045" 14'	for 12' gun	126.9005
Liner C-TFE RD 035"-045" 17'	for 15' gun	126.9006
Liner C-TFE YW 052"-062" 12'	for 10' gun	126.9007
Liner C-TFE YW 052"-062" 14'	for 12' gun	126.9008
Liner C-TFE YW 052"-062" 17'	for 15' gun	126.9009
Collet Plastic Liner 024"-045"	10 pcs.	131.0001
Collet Plastic Liner 052"-078"	10 pcs.	131.0002
O-Ring 3.5X1.5mm	10 pcs.	165.0008
Liner Support (for plastic liners) Specify Feeder		129.XXXX

¹ - Standard set-up

ABIMIG AUT WT

Necks, Bracket, Torch Body



Standard Swannecks

	ABIMIG AUT WT	x	y
Standard Neck 440 Model 50°	788.0005	145	85
Standard Neck 540 Model 50°	788.0026	150	90
Standard Neck 440 Model 180°	788.0130	175	-
Standard Neck 540 Model 180°	788.0134	190	-

Optional Swannecks**

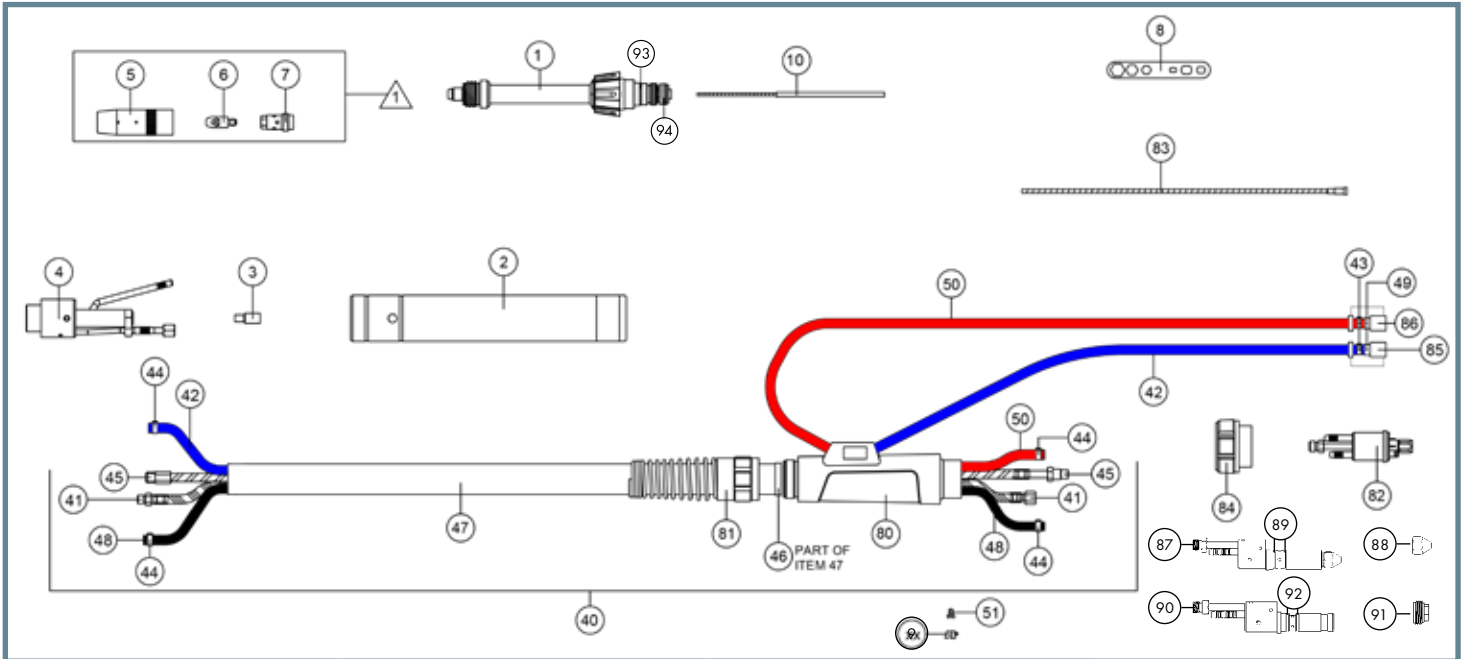
	Angle	ABIMIG AUT WT	x	y
ABIMIG AUT WT 440 Long	50°	788.0068	185	85
ABIMIG AUT WT 440 Extra Long	50°	788.0076	350	85
ABIMIG AUT WT 440 Long	60°	788.0074	165	105
ABIMIG AUT WT 540 Long	50°	788.0088	200	90
ABIMIG AUT WT 540 Extra Long	50°	788.0096	360	90
ABIMIG AUT WT 540 Long	60°	788.0090	190	105

*Note: x and y measurement in mm
 **Sold Separately



ABIMIG AUT WT

Parts Breakdown



Description	Part Number	Description	Part Number
1 Swanneck WT440/540	Page 11, 14	92 O-Ring 127x1.78 F/272.9014	165.0025
2 Handle AUT Threaded	180.D037	93 O-Ring 15x2	165.D016
3 Wire Guide Insert	131.D018	94 O-Ring 16x2	165.D012
4 Torch Body WT Series AUT	933.D002		
5 Nozzle	See Page 4		
6 Contact Tip M8 CU 262	See Page 4		
7 Holder Tip	See Page 4		
8 Contact Tip Wrench	191.0001		
9 Cap Cover Insulating	500.0251		
10 Neckliner F/WT440/540	See Page 5		
40 Cable Assembly	Call		
41 Power Cable	Call		
42 Hose Water 5x8mm PU Blue Bulk	103.9074.US		
43 Clamp Hose, 9.5mm Stepless	171.9001		
44 Clamp Hose, 8.7mm Stepless	171.9002		
45 Conduit	Call		
46 Ring Clamping Inner	400.0328		
Ring Clamping Outer	400.0329		
47 Cover Cable Outer Bulk	107.0004		
48 Hose Gas 4.9x7.9mm Bulk	109.0040		
49 Fitting Water Male	501.0114		
50 Hose Water 5x8mm PU Red Bulk	103.9075.US		
51 Screw Slotted Head M4x6	000.0552		
80 Support Bottom Round	500.0415		
Support Top Round	500.0416		
Hole Plug	500.0431		
81 Support Cable Spring Short	500.0235		
82 Block Adapter Rear W/C Euro	501.0034		
83 Liner Steel .052"-.062" 17'	122.9058		
84 Nut Adapter	500.0213		
85 Cap Blue Coolant Hose Fitting	501.2424		
86 Cap Red Coolant Hose Fitting	501.2423		
87 Block Adapter Rear W/C Miller	272.9005		
88 Liner Nut MR	272.9018		
89 O-Ring Miller Rear	165.9006		
90 Block Adapter Rear W/C Lincoln/Twe- co #4	272.9014		
91 Liner Nut HT/LN Pass Thru	272.9017		

ABI-CAR Welding Tractors

ABI-CAR E-1200-O

Adjustment in
X-, Y- or Z-direction

Oscillator

Cross support

Torch holder

Pendulum parameter
speed

Welding function

Interface
ABI-CAR &
Wire feeder

Magnetic lifter

All-wheel drive



ABI-CAR E-1200

Adjustment in
X-, Y- or Z-direction

Cross support

Torch holder

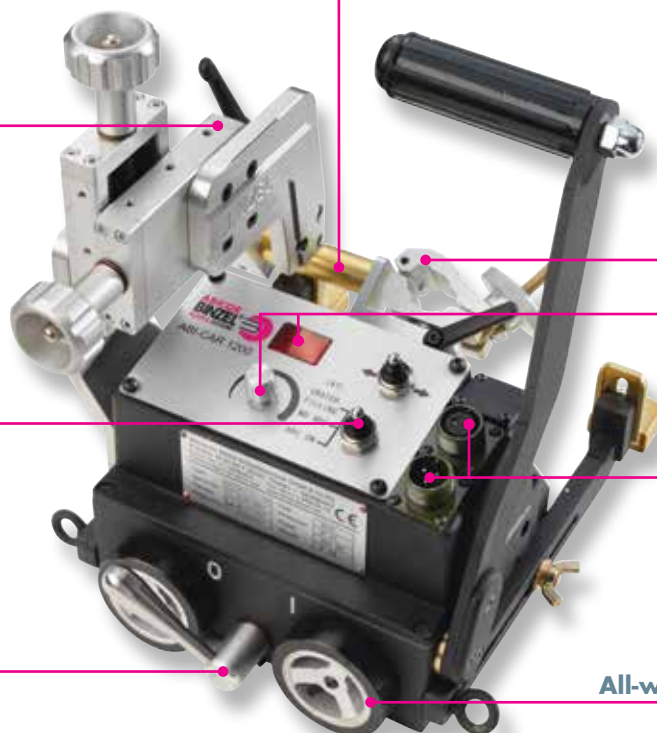
Speed

Welding function

Interface
ABI-CAR &
Wire feeder

Magnetic lifter

All-wheel drive



Part Numbers

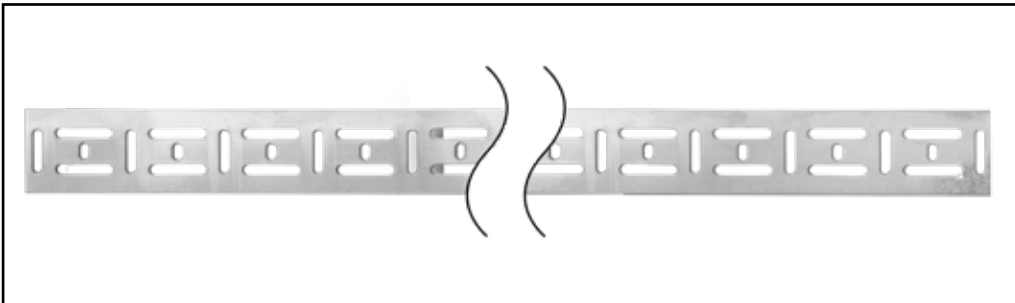
Description	Part No.
ABI-CAR E-1200-O	522.0070.1
ABI-CAR E-1200	522.0069.1

Connector Cable Part Numbers

Description	Part No.
Jumper to TWECO® 1/4" spades	175.9120
Jumper to LINCOLN® 5-Pin amphenol	175.9121
Jumper to ESAB® 2-Pin twist lock	175.9148.US
Jumper to PANASONIC® / OTC® 2-Pin female	175.9126
Jumper to FRONIUS® rectangular multi-pin	175.9134.US

Accessories

Description	Part No.
ABI-CAR E-1200 Series Track Kit 1.8m (71") with ON/OFF Magnets	522.0141.1
ABI-CAR E-1200 Series Track Section 1.8m (71")	522.0175.1
ABI-CAR E-1200 Series Track Section 1.0m (39.375")	522.0176.1
ABI-CAR E-1200 Series Bolt-On Track Guide Set	522.0178.1



Accessories

Coolers, Coolants, & Anti-Spatter

ABI-Cool Coolants



Our line of ABI-Cool and BTC coolants protect your water-coolers year around by lubricating the pump and prolonging the seal and shaft life of your coolers. Use once and change annually to maximize cooling and lubrication power. ABI-Cool LC protects from freezing up to -32 F and ABI-Cool ECO protects up to 10 F. BTC-50 is an incombustible coolant frost-proof up to -49 F with a low level of conductance to reduce metal corrosion within the system.

P/N 192.0232 (ABI-Cool LC 1 gallon)

P/N 192.9022 (ABI-Cool ECO 1 gallon)

P/N 192.0175 (BTC-50 NF 5 liters)

Additional coolant volumes available. Please see our website for details.

ABI-Shield Ceramic Anti-Spatter Spray

Aerosol ceramic anti-spatter coating spray. Thin coating creates a solid protective barrier against spatter on consumables, fixturing, and tools.

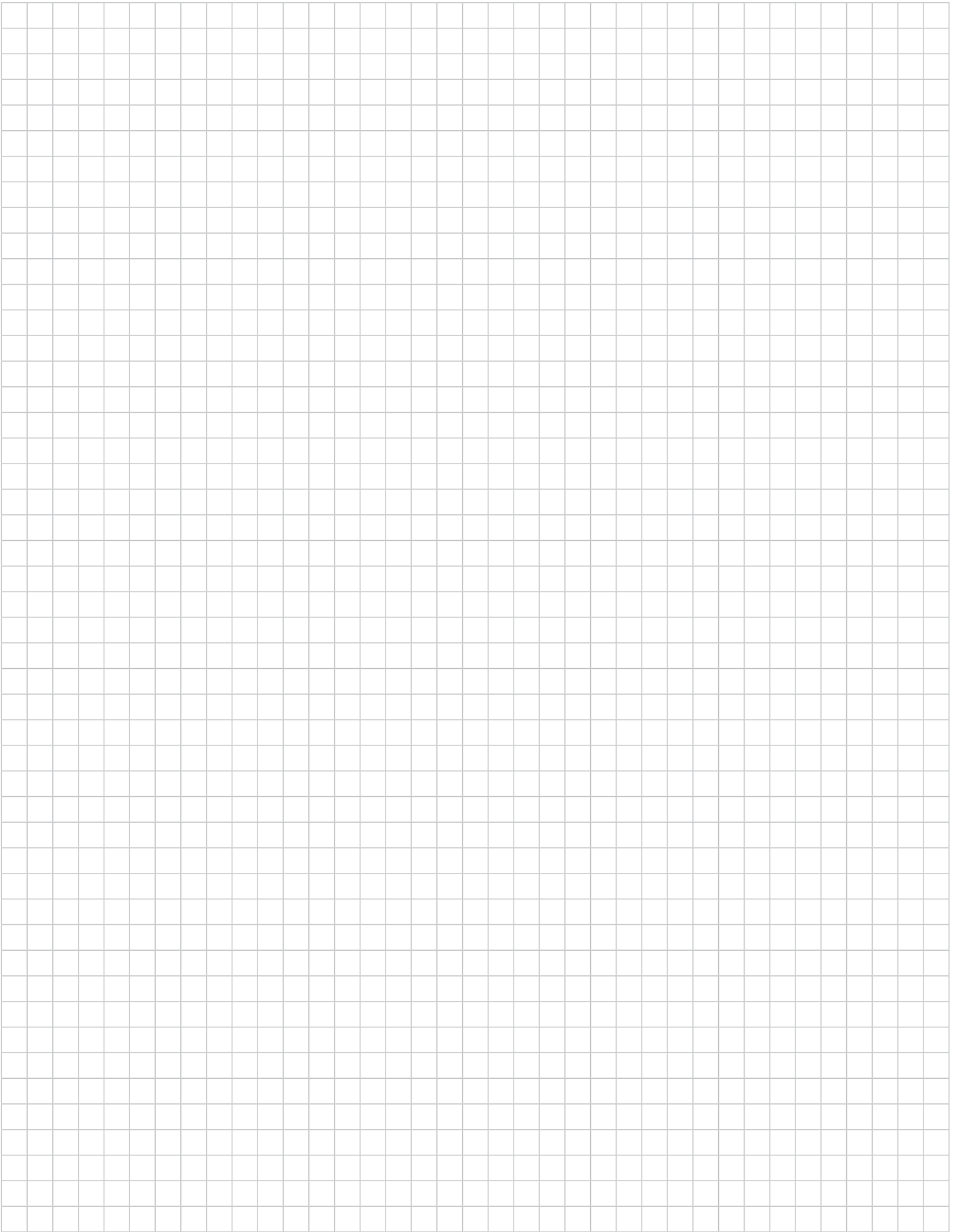
A single application required for 6 hours of welding means less downtime in both robotic and handheld welding applications. Dries in seconds!

13.5 oz. cans sold by the case or single can available.

P/N 192.0228.1 (Single)

P/N 192.0228.12 (Case of 12)





Binzel S.A. DE C.V.
Municipio Pabellon de Arteaga 102
Valle De Aguascalientes, 20358
San Francisco de los Romo, Ags.
Phone: +52 (499) 973.0133
Fax: +52 (499) 973.1388
Email: info@binzel.com.mx



ABICOR BINZEL USA, Inc.
650 Medimmune Court, Suite 110
Frederick, MD 21703
Phone: 1.800.542.4867
Fax: 1.301.846.4497
Email: customerservice@abicorusa.com

www.binzel-abicor.com